

# Rhode Island Judiciary 2009 ANNUAL REPORT



Justice Independence Honor

250 Benefit Street  
Providence, Rhode Island 02903  
(401) 222-3266  
[www.courts.ri.gov](http://www.courts.ri.gov)

# LETTER OF TRANSMITTAL

To the Honorable Members of the General Assembly:

I am pleased to present to you the 2009 Annual Report of the Rhode Island Judiciary, pursuant to G.L. 1956 (1997 Reenactment) § 8-15-7.

In July 2009, we welcomed a new Supreme Court Chief Justice – Paul A. Suttell. Chief Justice Suttell has taken the position of executive head of the Judiciary at a time when our state is facing serious financial difficulties. In these challenging times, we have strived to save and cut where possible. Nothing was considered too small a savings. As with the rest of state government, we only addressed critical needs in filling key positions.

This year's accomplishments and highlights included updating our technology, streamlining caseloads, refurbishment of our infrastructure, and education and public outreach. Our dedicated employees have continued to perform admirably despite budgetary and personnel cuts. We have maintained our quality of services throughout our courts. Although we may have delayed projects, restricted spending, and held positions open, the right to justice has not been compromised. We will continue to ensure that our services to the public are of the highest level of quality despite the current fiscal crisis.



Yours sincerely,

A handwritten signature in black ink, which appears to read "J. Joseph Baxter, Jr." The signature is fluid and cursive.

J. Joseph Baxter, Jr.  
State Court Administrator

## LETTER TO THE GENERAL ASSEMBLY

To the Honorable Members of the General Assembly:

It is with pride that I present to you the Judiciary's first Annual Report since I became Chief Justice of the Supreme Court in July 2009. It has been an interesting and challenging year. For many of us in state government, Rhode Island's fiscal crisis has been the driving force behind what we can – and cannot – do.

The judicial budget request for Fiscal Year 2010 was reduced by over \$5.5 million in general revenue funds. To meet the \$5.5 million target, the Judiciary reduced contract workers, delayed the computer refresh program, delayed the purchase of servers, and kept a minimum of 42 FTE positions vacant for the year. The availability of federal money is diminishing, leaving us with fewer options for some of our specialized programs.

The Judiciary will continue to do its part by sharing in the financial pain that all state agencies are experiencing. Unfortunately, the very nature of the poor economy tends to spur an increase in court cases across the board – criminal, civil, juvenile, and domestic. But in every crisis, there is opportunity. We will communicate with the executive and legislative branches to share our vision and goals, and we will involve all the stakeholders in the justice system to seek ideas that will not come with a huge price tag.

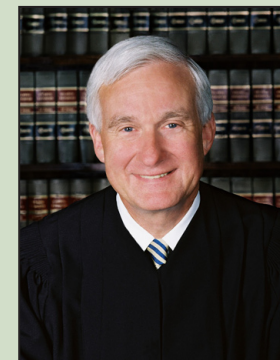
While some expenses are discretionary, we must keep in mind that justice is not discretionary. It is a pillar of society and the government. Our courts are places where people come to resolve their disputes. We must resist allowing our courts to be viewed as “a program.” We must keep an eye toward the public we serve and maintain the quality of services that the public has a right to expect.

I look forward to working with you in the days ahead to promote and create a better Rhode Island.

Yours sincerely,



Paul A. Suttell  
Chief Justice



Constance Brown

# TABLE OF CONTENTS

|                                |     |
|--------------------------------|-----|
| Letter of Transmittal          | i   |
| Letter to the General Assembly | iii |
| Table of Contents              | v   |

## THE COURTS

|   |    |
|---|----|
| Supreme Court   | 2  |
| Judicial Technology Center                                  | 3  |
| Interpreters  | 4  |
| Judicial Education and Mandatory Continuing Legal Education | 5  |
| State Law Library   | 5  |
| Facilities and Operations                                   | 6  |
| Judicial Records Center                                     | 7  |
| Superior Court  | 8  |
| Family Court  | 10 |
| District Court  | 12 |
| Workers' Compensation Court                                 | 14 |
| Rhode Island Traffic Tribunal                               | 16 |

## JUDICIAL PERFORMANCE

|                                   |    |
|-----------------------------------|----|
| At a Glance                       | 20 |
| Judiciary's Caseload Summary      | 21 |
| Statistical Tables for all Courts | 22 |

## COURT STRUCTURE

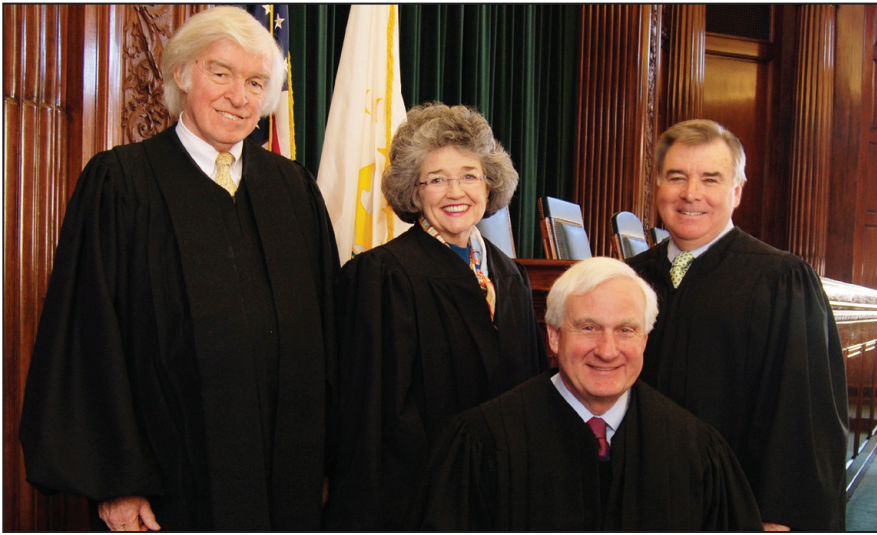
|                              |    |
|------------------------------|----|
| Rhode Island Court Structure | 42 |
|------------------------------|----|

RHODE ISLAND JUDICIARY  
250 Benefit Street  
Providence, Rhode Island 02903  
(401) 222-3266  
[www.courts.ri.gov](http://www.courts.ri.gov)



## THE COURTS





The Rhode Island Supreme Court, with Chief Justice Paul A. Suttell, seated, and standing, left to right, Justice William P. Robinson III, Justice Maureen McKenna Goldberg, and Justice Francis X. Flaherty.

## SUPREME COURT

### Community Outreach and Public Relations

The Office of Community Outreach and Public Relations assists the Chief Justice and the court administration in promoting access to justice through user-friendly courts, community outreach, education, quality court services, and accountability. The office continued to work with the state Department of Education to attend career fairs and to offer informative programs about the courts to public and private schools throughout the state. The office administers the Judiciary's court education program "Justice Rules" with a K-12 curriculum to teach children about the basic principles of the legal system; to cultivate positive attitudes about the third branch of government; and to promote interest in careers in the Judiciary.

In 2009, the office expanded its outreach to include more scouting groups and began the transition to assume direction of the Judiciary's "Summer Institutes on the Courts" program, which brings teachers into the courts for week-long seminars on behalf of the Rhode Island Legal/Educational Partnership. This program serves from 60 to 100 teachers each summer. The office partners with the state Department of Children, Youth, and Families, the Public Defender, the Attorney General, the Child Advocate, the Department of Corrections, and the Wyatt Detention Center for this annual program.

The office also continued its annual outreach with the Naval War College in Newport, and initiated what promises to become a regular relationship with the United States Military Academy at West Point. The Supreme Court continued its regular practice of "riding the circuit" to conduct oral arguments of actual cases in the outlying cities and towns. In 2009, the court sat in East Providence at East Providence High School.

### Appellate Mediation Program

The Appellate Mediation Program saw a 20 percent increase in the number of new cases in 2009, as well as an increase in the number of retired judges who serve as mediators. Eleven mediator-justices are available to provide services to the program. Notwithstanding the increase in cases this year, the program sustained its resolution rate near 45 percent and maintained its highest satisfaction rate for two years in a row since its inception in 2003.

### Law Clerk Department

For 2009, the Law Clerk Department had another productive term. The department of 15 law clerks worked on approximately 154 Superior Court trial assignments in addition to its work with motion calendars, special calendars, the Family and District Courts, and the Rhode Island Traffic Tribunal Appeals Panel. Overall, the law clerks provide legal research and writing assistance to the various trial courts of the Rhode Island Judiciary. Such assignments encompass civil, criminal, and administrative matters.

At the outset of the judicial term, the law clerks participated in a comprehensive orientation program, which is now held during the week before the fall term. Also, the Law Clerk Department has continued its use of interns from summers to the entire year. Students are from different law schools and receive course credit for various internships during the academic year. Expansion of the Law Clerk Department intern program has effectively increased the production. Additionally, monthly department meetings to review new case law, discuss legal topics, and review procedures are continuing to be held at each of the courthouses. These meetings have also been expanded to include more judges as speakers as well as actual presentations in the courtrooms. Finally, a more comprehensive and computerized case tracking system has now been instituted in the Law Clerk Department. This new, improved system has proven most efficient in the processing of assignments and the tracking of case files.

The overall goal of the Department remains twofold. The Law Clerk Department strives to maintain a well-trained staff of law clerks to assist the Judiciary with legal research and writing requests. At the same time, the Law Clerk Department provides law school graduates with an opportunity to learn about the Rhode Island Judiciary and to gain experience with diverse areas of the law.

## ADMINISTRATIVE OFFICE OF STATE COURTS

### Judicial Technology Center

The Judicial Technology Center's (JTC) focus in 2009 was on upgrading existing infrastructure and implementing new technologies. At the Garrahy Judicial Complex, a new uninterruptible power supply and hardware racks were installed in the computer room, which houses the numerous servers and networking equipment that support the Judiciary.

The JTC developed and installed a new system for the Jury Commissioner's Office to manage jury pools. Because this application was developed by and is owned by the Judiciary, there will be no ongoing maintenance fees associated with this system. This new approach is expected to greatly reduce expenses.

The Appellate Mediation Program was added to the Judiciary's case management system in January, and the Office of Court Interpreters was added in December. Previously, statistics from those departments had been manually calculated. Also, an interface was developed between the courts and the Department of the Attorney General to allow for the smooth electronic transfer of restraining orders to law enforcement.

The JTC expanded the use of digital recording technology in 2009 with the addition of several Family Court courtrooms. Some Superior Court courtrooms and all District Court and Rhode Island Traffic Tribunal courtrooms were outfitted with this technology in prior years. Digital recording preserves a higher quality voice record of court proceedings. It will not deteriorate over time as will older analog technology. Specific areas of testimony can be isolated for playback, and the full record of the proceeding can be "attached" to the case management record. Duplication of these new recordings is as simple as burning a CD on a computer.

In 2009, the Judiciary continued to work with the state Division of Taxation to intercept income tax refunds headed toward people who owe the courts money. The Judiciary collected \$408,929 from the tax intercept program and collected \$94,875 in sales of data and reports.

### **Interpreters**

In 2009, the Office of Court Interpreters (OCI) collaborated with other departments in the courts on the design and creation of two projects: an interpreters' page within the Judiciary's website; and a new statistical data collection system. The interpreters' webpage includes information on the difference between a bilingual person and a court interpreter, the interpreters' Code of Ethics – which contains sections on impartiality, confidentiality, and professional standards – and how a court interpreter may be reached when a court user needs one. All that information has been translated and published in Spanish and it will be translated into other frequently used languages in the near future.

The second project, a new statistical data collection system, was recently implemented to improve and streamline the OCI's data collection. The OCI will now be able to produce more detailed statistical reports on interpretation services in specific areas within the courts.

The year 2009 marked the fifth year of providing interpreting services in a wide range of court cases. In 2009, the OCI assisted approximately 7,000 court users in criminal and civil matters. Collaboration continued with the Community College of Rhode Island in providing guidance and internship opportunities to the students of the school's Bilingual Judicial Interpreter Program.

### **Judicial Education and Mandatory Continuing Legal Education**

The Supreme Court's Mandatory Continuing Legal Education (MCLE) Commission's Chairman, Justice William P. Robinson III, and its Executive Director, Holly Hitchcock, M.Ed., were honored when Ms. Hitchcock was invited to represent the Commission at the nationwide Continuing Legal Education (CLE) "Critical Issues Summit: Equipping Our Lawyers: Law School Education, Continuing Education, and Legal Practice in the 21st Century." The summit gathered 200 legal education scholars from law schools, CLE regulatory bodies, law firms, and CLE program providers for a four-day meeting. Attendees examined global changes to the practice of law and drafted recommendations for legal education programming to meet the evolving needs of practitioners. The results of the summit will be published in 2010.

The MCLE Commission responded to an increase in its annual service constituency topping 5,000 attorneys. Through its outreach efforts in 2009, the Commission saw a marked increase in overall compliance exemplified by a 33 percent decline in the number of non-compliance notices issued. As well, new lawyer orientation, online access to forms, web-based courses, and MCLE compliance counseling has strengthened participation in continuing legal education.

The Education Office served all the Judiciary's justices, judges, and magistrates who attended the court's annual judicial conferences held in March, June, and September. A broad range of topics was selected to further the excellence of judicial service for our citizens. Local and national speakers presented on subjects including: Contempt, Gangs in Rhode Island, Electronic Frontiers in Litigation, Fraud, Anticipating Problems in the Courtroom, and Concepts of Justice in Literature.

### **State Law Library**

The typical serene atmosphere of the State Law Library was punctuated in 2009 by the sounds of hammers and the aroma of paint during a major renovation project. Thanks to a generous grant from the Champlin Foundations, falling plaster and peeling paint have been replaced and the wood and brass have been polished. As envisioned by the Providence County Courthouse Commission in 1933, the courthouse was designed "not as a place of splendor, but rather one of quiet dignity." The library, with its renovation completed, indeed reflects that vision.

While the physical environment embodies the best of the past, adapting to and embracing the technologies of the future are evident in library operations. The library has joined the Higher Education Library Information Network (HELIN), a consortium of research libraries in Rhode Island that share a common catalog and underlying mission. More than a just a catalog, the database provides interactive, integrated access to information. The Judiciary and attorneys in Rhode Island have access to the vast information depositories available at prestigious colleges and universities. With the click of a key, materials from other libraries can be accessed, requested, and then delivered through the statewide

delivery system. This technology partnership elevates awareness of the law library's valuable and unique collection and brings Rhode Island one step closer to seamless statewide access.

Difficult economic conditions motivate the library staff to secure the best research materials available and to maintain the integrity of the collection. At the same time, frugal decisions have been made to avoid unnecessary duplication and to implement cost-saving measures. Price, value, and usage are important considerations when making collection development decisions. The continued superior service by the library staff has offset many of these difficult budget restraints.

The library has enhanced its partnership with Office of Community Outreach and Public Relations in the Justice Rules Program. Over 30 classes and 600 students participated in classes that acquaint school children and young adults with the judicial process. The library is given the opportunity to showcase its unique resources, enrich the lives of students, promote positive attitudes toward the judicial system, and cultivate interest in law-related careers.

#### **Facilities and Operations**

Although staffing is currently down by 29 percent, the Facilities and Operations/ Security Office had a constructive year in 2009. Many capital projects were completed as well as daily operations improved through efficiency. With the opening of two new courthouses, the office has greatly changed over the past few years and has taken on greater responsibilities. The two new facilities are state-of-the-art in terms of technology for heating, ventilation, and air conditioning (HVAC), security, and operational functions. When the new facilities were opened, demand for the same type of systems was requested in the existing courthouses. Security and HVAC led the way with the most changes.

Security and safety were greatly improved in 2009 with the installation of monitored intrusion alarm systems, upgrading and adding cameras in public areas, adding digital voice recorders, upgrading fire alarm systems, installing new fire alarm panels, and replacing the antiquated halon systems with wet systems. Courthouse construction this past year included replacement of two of the public elevators at the Garrahy Judicial Complex, repair and renovation of the clock tower at the Licht Judicial Complex, repair and renovation of the cupola at the Murray Judicial Complex, and the Kent County Courthouse drainage problem in the garage was corrected. The garage was also retrofitted with energy efficient fixtures.

The office continues to make great strides in HVAC. Improvements in the HVAC systems in the courthouses have yielded significant savings in operational costs. The office continues to develop a long-term plan with engineers to improve the air quality at the Garrahy Judicial Complex by initiating performance studies, implementing the recommendations, and planning projects over the next several fiscal years.

In the telecommunications arena, the telephone lines at all building have been verified and are maintained in-house. This resulted in a savings of thousands of dollars and improving down time. The accounts payable section continues to review all invoices and make sure all billing is correct before processing. The bills are processed with 24 hours of receipt as long as they are billed at the correct rate.

#### **Judicial Records Center**

The Judicial Records Center (JRC) provides secure storage for the semi-active, inactive, and archival records of the Rhode Island Judiciary. The JRC also provides efficient reference services for the courts, members of the bar, and members of the public who require court records for research purposes.

In 2009, the JRC accessioned 146,746 case files in 6,553 boxes. The JRC now stores over 4,797,311 case files in 89,485 cubic foot boxes and 5,124 manuscript court docket, minute, and record books. The JRC staff responded to over 74,000 requests for records during the year. These included over 37,000 individual records that were viewed at the JRC. Staff also provided access to an additional 17,000 case files for researchers for credit agencies and social policy institutes.

There were over 10,400 archival requests for the pre-1900 court records in 2009. These include requests from genealogists as well as graduate students, lawyers, and professional historians. Particularly noteworthy this year was the publication by Northern Illinois University Press of *To Bring Law Home: The Federal Judiciary in Early National Rhode Island* by Professor D. Kurt Graham. In this book, Dr. Graham uses court and bar records from the judicial archives, as well as federal court records, to explore the development of the bar and the judiciary in colonial and early federal Rhode Island. He demonstrates that the federal judicial system was readily accepted in Rhode Island, and argues that the federal judicial system exerted a significant nationalizing influence on the citizens and states of the new American nation. Pulitzer Prize-winning historian Gordon Wood praises *To Bring Law Home* as "a superb, well-written, and much needed study of the early federal judiciary" and labels the book as "a model of historical scholarship." Striking a similar note, legal historian David Konig states that the book "fills a major gap in the scholarship of the Early Republic" and "expands our understanding of law and the legal profession at a formative point in our history."

The successful completion of two grant projects from the Rhode Island Foundation has significantly enhanced the preservation of the archival court records and further increased the accessibility of the court records to scholars. Under the auspices of the first grant, 66 court record books dating from 1671 through 1800 were microfilmed, and four of these books received conservation treatment. Simultaneously, archives staff flat-filed 25,000 colonial court case files in archival folders and boxes. The Supreme Court was also awarded a third grant from the Rhode Island Foundation that will provide for constructing custom-fitted archival phase-boxes to help preserve 260 manuscript court record books dating from 1671 through 1900.





*Bottom - Left to right:* Judith C. Savage, Patricia A. Hurst, Robert D. Krause, Alice Bridget Gibney (Presiding Justice), Melanie Wilk Thunberg, Francis J. Darigan, Jr., Michael A. Silverstein, and Edward C. Clifton.  
*Second Row - Left to right:* Jeffrey A. Lanphear, Susan E. McGuirl, Stephen P. Nugent, O. Rogeriee Thompson, Netti C. Vogel, Gilbert V. Indeglia, Edwin J. Gale, Daniel A. Procaccini, and Allen P. Rubine.  
*Top - Left to right:* Patrick T. Burke, Patricia L. Harwood, Brian P. Stern, Bennett R. Gallo, William E. Carnes, Jr., Kristin E. Rodgers, William J. McAtee, and Gordon M. Smith.  
*Not pictured:* Susan L. Revens

## SUPERIOR COURT

### Master Civil Calendar Call

Beginning on October 26, 2009 the Superior Court conducted five separate Master Calendar calls of 1,068 civil cases designated “ready” for trial, which were attended by hundreds of attorneys. Cases were meted out to six judges who were assigned the task of conferencing each case: determining the trial attorneys, the number of trial days and witnesses, issues unique to the case, and the exact posture of the case in terms of trial readiness and settlement potential. The information gathered was assessed with the assistance and coordinated efforts of personnel from the Clerk’s, Arbitration, and Administration offices. Trials of these cases beginning with the oldest case began in January 2010. As of March 31, 2010, 435 files, or 40%, were closed.

### Civil Settlement Week

In December 2009, the Superior Court conducted its annual Settlement Week. Volunteer attorneys mediated 221 cases of which 117 were settled for a 53 percent success rate. Also, another 15 cases were expected to settle, which will ultimately result in a 60 percent success rate.

### Medical Malpractice Mediation

The Superior Court has approximately 450 medical malpractice cases pending statewide. Inherent in these types of cases are unique scheduling problems which, historically, have accounted for expenditures of time and resources of both bench and bar.

In order to move these cases more efficiently through the pretrial process, the Superior Court has initiated a new procedure by which all scheduling issues will be addressed by a single justice.

The cases will be conferenced with all counsel to establish realistic timelines for completion of fact and expert discovery. The progress of all cases will be monitored, and when it is determined that a case is ready for meaningful settlement discussion, it will be forwarded to mediation. Likewise, when a case is ready for trial, the case will be referred to the appropriate trial calendar for assignment.

It is expected that this new procedure will be cost effective for counsel and litigants alike. Also, it is expected that there will be a valuable saving of time for counsel and the court.

### Adult Drug Court

The Rhode Island Adult Drug Court provides a mechanism for nonviolent felony offenders suffering from addiction to be referred to the appropriate level of substance abuse counseling and ultimately adopt a drug-free lifestyle. In 2009, the Adult Drug Court continued to evolve with over 175 active participants and 100 people being actively reviewed at any given time.

Eight years of operation have resulted in impressive and measurable successes in changing the course of many lives that may have otherwise been lost to a lifetime of drug or alcohol addiction. Defendants must comply with rigid terms and conditions set forth in the Adult Drug Court contract. The Adult Drug Court has proudly graduated 210 individuals who, among other accomplishments, have returned to school, gained meaningful employment, and re-established family connections, elements lost through their substance addiction.

### Gun Court

The Rhode Island Gun Court, which heard its first case on September 12, 1994, has been a tremendous success, emulated by as many as 20 other jurisdictions. All Providence/Bristol County criminal cases with firearms charges as specified in G.L. 1956 § 8-2-15.1 are assigned to the Gun Court. Trial is then scheduled within 60 days of the completion of discovery.

The dramatic impact on the prosecution of gun crimes is seen in the reduction of the disposition time, from an average of 18 months to merely four months from the case filing date. In 2009, 195 cases were disposed on the Gun Court calendar, with an average disposition rate of 205 days. In addition, 1,411 jail terms have been imposed since the program’s inception, and 95 percent of cases result in the imposition of a sentence.



*Bottom - Left to right:* John A. Mutter, Kathleen A. Voccola, Raymond E. Shawcross, Jeremiah S. Jeremiah, Jr. (Chief Judge), Haiganush R. Bedrosian, Michael B. Forte, and Francis J. Murray, Jr.

*Top - Left to right:* Jeanne L. Shepard, George N. DiMuro, Edward H. Newman, Thomas Wright, Patricia K. Asquith, Stephen J. Capineri, Laureen D'Ambra, Debra E. DiSegna, and Armando Monaco, II.

*Not pictured:* Angela M. Paulhus, John J. O'Brien, Jr., Colleen M. Hastings, and John McCann.

## FAMILY COURT

### National Adoption Day

The Family Court welcomed 225 people and hosted a very special event on November 21, 2009 in recognition of the 6th Annual National Adoption Day. Rhode Island's celebration coincided with events being held across the United States on this day to draw attention to the adoption process and the large number of children available for adoption. The court finalized 18 adoptions with 16 different families. The celebration was supported by many sponsors and community agencies.

### Child Support Collections

The Rhode Island Family Court Child Support/Collections Office collected \$82,783,812.27 for the calendar year 2009, with an average of \$290,000.00 in daily receipts. During the 2009 calendar year, the Family Court magistrates heard 22,926 child support cases. The office continues to increase the amount of electronic fund transfers and is looking to partner with the Department of Human Services and the State of Connecticut to streamline all check processing.

### Court Appointed Special Advocate

The Office of the Court Appointed Special Advocate (CASA) enters its 31st year of operation with 200 sworn volunteers advocating for the neglected and abused children statewide in the custody of the Rhode Island Department of Children,

Youth, and Families (DCYF). CASA volunteers are members of the community who step forward to be a voice for children in state care; volunteers undergo a 30-hour course of training and are asked to give an 18-month commitment to the CASA program.

The CASA volunteers assist the full-time staff of 10 lawyers, five social caseworkers, and four support staff in representing approximately 3,000 children in the care of DCYF. Together the CASA staff and volunteers work to ensure that each child in state custody has a voice in the proceedings before the Family Court.

### Supervised Visitation

The mediation program continued its success with the expansion to all counties last year. More than two-thirds of the cases referred to mediation are resolved without the need for a contested court hearing. Cases involving custody, visitation, and child support are now referred to a mediator within 24 hours, with the goal of engaging the litigants before the next court hearing. The Family Court began mediating miscellaneous cases in Providence County in 1997 and has been expanding the mediation model ever since. The ultimate goal is to allow all parties to address their issues and work together in being part of the solution.

### The Rhode Island Family Court Juvenile Justice Reform

In 2009, the Family Court joined forces with RI Kids Count and the Anne E. Casey Foundation to address Juvenile Justice Reform. The Family Court is working with collateral Rhode Island partners to reduce reliance on secure confinement and find alternative ways to address developmentally appropriate interventions.

Rhode Island has formally agreed to take part in the Casey Foundation's nationally recognized program called the Juvenile Detention Alternatives Initiative (JDAI). Rhode Island joined approximately 25 other states in replicating a proven model to reduce the reliance of highly secure detention settings.

Other goals through the JDAI efforts will include the reduction of disproportionate minority contact, the increase of family interventions and community collaborations, and the implementation of highly attuned policies to address developmental needs. It is the Family Court's hope that this initiative will continue the court's mission for juvenile rehabilitation while maintaining safety for the individual and community.



*Bottom - Left to right:* Elaine T. Bucci, Stephen P. Erickson, Michael A. Higgins (Acting Chief Judge), Frank J. Cenerini, and Madeline Quirk.

*Top - Left to right:* Joseph P. Ippolito, Jr., Mary E. McCaffrey, Raphael Ovalles, Jeanne E. LaFazia, William C. Clifton, Pamela Woodcock Pfeiffer, Anthony Capraro, Jr., and Christine S. Jabour.

*Not pictured:* Joseph T. Houlihan, Jr.

## DISTRICT COURT

### Bail Project

In 2009, the District Court Clerk's Office undertook a project to evaluate all monies being held by the court for bail in cases which have been adjudicated and in cases where warrants had issued because the defendant failed to appear. A plan of action was formulated in conjunction with the Supreme Court Finance and Budget Office.

Each case was evaluated and monies were directed into three categories: \$746,276 was turned over to the General Treasurer as unclaimed property; \$725,492 was used to pay fines and costs owed by the defendant (which funds are also turned over to the Treasurer's Office); and \$353,219 was forfeited to the State because the defendant failed to appear and a warrant was outstanding.

These special revenues to the state were accomplished at a cost of approximately \$10,000 in data entry overtime.

### Special Small Claims Calendar

As 2009 began, a local law firm advised the District Court to expect an extraordinary number of small claims cases to be filed this year on behalf of certain credit card companies which it represented. In response, a special calendar was established at the Kent County Courthouse to handle this influx so that the regular small claims calendars throughout the State would not be disrupted.

The special calendar remained active until late 2009, when the number of filings abated. In all, approximately 4,400 small claims cases were handled expeditiously on the special calendar and an additional 1,000 civil cases were processed by the calendar project team.

### RONCO Upgrade Installed

The District Court and the Judicial Technology Center installed an important upgrade to its communications link with the Restraining Order, No-Contact Order system known as RONCO, which is maintained by the Bureau of Criminal Identification (BCI) unit of the Department of the Attorney General. Since its inception, the District Court had notified RONCO of the issuance or withdrawal of a Restraining or No-Contact Order by facsimile. This system was prone to problems with legibility and timeliness. Under the new system, court personnel enter such information directly into the court's database and RONCO is electronically notified immediately.

### Online Payment System

Throughout the year, District Court personnel were working diligently with the Judicial Technology Center and the Supreme Court Finance and Budget Office to design and install an online payment system for fines, fees, and costs. At year's end, the Judiciary had developed a relationship with a vendor and the project was entering the final design, programming, and testing phase.

### District Court Welcomes Associate Judge Joseph T. Houlihan, Jr.

During 2009, the District Court welcomed a new Associate Judge, the Honorable Joseph T. Houlihan, Jr. of Portsmouth. Judge Houlihan, who is a 1987 graduate of Boston College and a 1991 graduate of the Boston College Law School, began his legal career in 1992 with the Department of the Attorney General where he served as a Special Assistant Attorney General, prosecuting cases before the District, Family, and Superior Courts and handling appeals before Supreme Court. From 1996 until his appointment, he practiced law with the firm of Houlihan, Managhan & Kyle, LLP, concentrating in domestic law and criminal defense.



*Bottom - Left to right:* Janette A. Bertness, Debra L. Olsson, George E. Healy, Jr. (Chief Judge), Bruce Q. Morin, and Edward P. Sowa, Jr.

*Top - Left to right:* Robert E. Hardman, Jr., George T. Salem, Jr., Dianne M. Connor, Hugo L. Ricci, and Robert M. Ferrieri.

## WORKERS' COMPENSATION COURT

Under Rhode Island law, the provisions of the Rhode Island Workers' Compensation Act are a necessary condition of every contract of employment entered into in our state. If an employee is hired in Rhode Island or suffers a work-related injury here, the compensation law is triggered to provide benefits while the injured employee remains disabled. The court's role is to resolve any disputes arising out of such injuries whether it addresses the liability for the claim, the nature of the injury sustained, or the extent of the disability. The basic jurisdictional component then focuses upon the employment relationship.

Since less people are working in the state, it is entirely logical that less work-related injuries occur. Where the severe economic conditions have devolved to the point that unemployment is near record high, the number of cases filed at the court would naturally decline. As anticipated, the total number of filings in 2009 declined by 7 percent. Another phenomenon caused by the severe economic downturn is the reduction of reported injuries by those employees who remain working. Fear about the response to such reports and a perception that a work-related injury could jeopardize the employment relationship tends to depress the number of injury claims and, therefore, the number of cases filed with the court. Ironically, since many of these cases will ultimately result in disability and litigation, the number of petitions seeking to affix liability for a work-related injury will ultimately rise in upcoming years.

The current reduction in filings has no effect upon the court's mission to improve efficiency or to increase outreach efforts. To the contrary, the judges and staff of the court are acutely aware of the economic drain upon the injured worker and remain committed to provide the most efficient dispute resolution system possible. As in the past, the court readily acknowledges that the success of its mission is due to the dedication and efficiency of the court's staff. Consistent with the demands of the budget, staff vacancies have not been filled and every unit in the court is working with a reduced complement. Such reductions have imposed greater burdens upon those who remain and the staff has responded with its usual devotion. Their dedication to the court's mission and their commitment to provide the most efficient service to the litigants who seek assistance is inspiring. The entire staff remains dedicated to its duty to provide the highest quality service to the citizens of our state. Cases are received for filing, registered in the data system, and processed for hearing with the utmost efficiency.

Although the total number of filings has declined and the cases being managed are more complex than at any other point in the court's history, the same level of efficiency has been maintained. A greater percentage of cases were closed, 75.3 percent, at the pretrial conference than at any other time in the past. This is an increase of more than 2 percent over the prior year and represents the highest statistical point yet recorded. The time frames for closure at pretrial have remained remarkably consistent over the last two years. Most significantly, more than 90 percent of the cases were resolved by the court at the pretrial level within 90 days of filing. It is even more remarkable that more than 70 percent of all cases were closed by the court within 60 days of the date they were filed. Since it has long been recognized that a delay in resolving contested compensation cases generates additional litigation, the court's efficiency in hearing and deciding these contested cases serves to maintain the entire caseload at a reasonable level.

As in past years, the court and its staff continue to be active in the Judiciary's diverse outreach programs. The judges and staff voluntarily appear at school job fairs and other educational forums to discuss the judicial process and the workers' compensation system. We have often appeared on weekends or after hours on Hispanic radio or at immigrant community forums to reinforce the principle that our government is committed to serve all who seek its help and that fluency in English is not a prerequisite for justice.

The court's YES-RI program remains the keystone of its outreach efforts. Since this program was announced in 2005, members of the compensation bar and safety professionals have joined with representatives of the court to visit young workers in school and outreach programs to discuss their right to a safe work place and their entitlement to a workers' compensation benefit in the event that they are injured while working. In 2009, the court's YES-RI program visited 20 schools and educated more than 2,000 young people. We believe that this program not only educates these students but also empowers them and demonstrates that the Judiciary is committed to serving all who need our help.



Left to right: Albert Ciullo, R. David Cruise, Lillian M. Almeida, William R. Guglietta (Chief Magistrate), Domenic DiSandro, III, William T. Noonan, Alan R. Goulart, and Edward C. Parker.

## RHODE ISLAND TRAFFIC TRIBUNAL

The calendar year 2009 posed many challenges for the Rhode Island Traffic Tribunal (RITT). With an enormous state budget deficit, the RITT was asked to do “more with less.” Due to the budget constraints, the RITT operated with 10 percent fewer employees to handle the volume that comes before the court.

For the sixth straight year, the court heard over 100,000 violations (104,395). In addition to these filings, the court also heard over 3,500 motion hearings and handled over 4,000 show cause hearings. The court’s Appellate Division heard 150 traffic and municipal court appeals and 282 appeals for the Registry of Motor Vehicles. Despite the large number of cases filed with the court during 2009, the RITT was able to dispose of over 109,000 violations, representing 103 percent of the cases that were filed. This continues the trend of the RITT disposing of more cases than are filed within a calendar year.

The court continued to be a major contributor to the general revenue fund for the State of Rhode Island. In calendar year 2009, the court collected nearly \$12 million that was deposited as general revenue. This represents over 81 percent of the costs that were assessed during the calendar year. This 81 percent figure is one of the highest rates for collections of traffic courts in the nation. In conjunction with the Department of Revenue, the RITT was also a major contributor in the State of Rhode Island’s Tax Intercept Program, collecting over \$419,000.

The RITT’s large contribution to the general revenue fund was based upon 14,000 less cases being filed in 2009, a 13 percent reduction from 2008. Despite the reduction in the number of cases presented to the court, the RITT was still able to collect nearly 95 percent of the revenue it had collected from the previous year.

Several judicial functions were expanded to assist the court in handling the thousands of citizens appearing on its calendars. In 2009, the RITT expanded

the accessibility of the Associate Judges and Magistrates to the public by creating a miscellaneous “2A” calendar. This calendar allows any “walk-in” motorist to have access to a Judge or Magistrate during the working hours of the court. The RITT also restructured its website and telephone payment processes, which reduced costs to the motorists. An automated teller machine was installed in the main concourse of the courthouse so that motorist would have access to funds to enable them to pay their fines and costs at the court.

Additionally, the RITT played an increasing role in providing services to the community. Many Associate Judges and Magistrates of the court participated in numerous training programs offered by the Rhode Island State Police Training Academy and the Municipal Police Training Academy. These included presentations on court procedure as well as a moot court demonstration on motor vehicle violations. The court was also a host to a Mothers Against Drunk Driving Annual Holiday Prevention Kick-off, which was attended by members of law enforcement, victims of drunken driving accidents, and AAA of Rhode Island.

The RITT continued to expand its relationships with the municipal courts of the cities and towns of our state. The RITT gave a presentation at the Municipal Court Judges’ Association Annual Meeting. This was a continuing legal educational seminar where there was an opportunity to meet with all the municipal court judges to discuss practice and procedures of those courts. The expansion of this relationship will provide more uniformity and continuity in the administration of justice between these two court systems.

The RITT has continued to implement the E-Citation program. In 2009, the Pawtucket and Richmond Police Departments joined the State Police, Burrillville, East Providence, Narragansett, North Kingstown, and Portsmouth as E-Citation agencies. In calendar year 2009, 47,298 E-Citations were issued. E-Citations provide great benefits to all parties, police, motorists and the courts. E-Citations are much clearer for the motorists to read and the “Know Your Rights” pamphlet is pre-printed on the back of each ticket providing valuable information to the motorist. E-Citations also eliminate redundancy of data entry efforts, validate summons information at the time of the initial stop, improves the accuracy of information, and automates the return of disposition information from the court to the police departments, eliminating the need for data reentry.

The RITT has been implementing IBM FileNet Enterprise Content Management System (ECM). An integrated data entry application was implemented to allow for case entry using the scanned copy of the summons. This enhancement backfills the information where available and greatly improves the capabilities of the data entry staff and data quality. The RITT scanned over 284,000 documents consisting of over 1.5 million images. The staff has completed scanning cases with outstanding balances back to 1999, as well as keeping current with new case scanning. As a result, operational efficiency has greatly improved and allows the RITT to be more responsive to public inquiries.



## JUDICIAL PERFORMANCE



## AT A GLANCE

### SUMMARY OF JUDICIAL BUDGETS

| Description                                 | FY 2008           | FY 2009           | FY 2010 Enacted   |
|---|-------------------|-------------------|-------------------|
| Supreme Court Operations                    | 25,210,653        | 23,993,244        | 24,678,116        |
| Defense of Indigents                        | 3,369,184         | 3,345,627         | 3,365,689         |
| Superior Court Operations                   | 18,168,360        | 17,928,481        | 18,257,677        |
| Jury Operations                             | 1,466,820         | 1,441,642         | 1,603,631         |
| Family Court                                | 18,016,573        | 17,416,346        | 18,151,560        |
| District Court                              | 9,625,764         | 9,983,612         | 10,175,958        |
| Traffic Tribunal                            | 6,834,964         | 7,456,121         | 7,545,676         |
| Judicial Tenure and Discipline              | 107,533           | 97,166            | 128,922           |
| <b>General Revenue Total</b>                | <b>82,799,851</b> | <b>81,662,239</b> | <b>83,907,229</b> |
| Supreme Court                               | 250,106           | 212,785           | 102,440           |
| Superior Court                              | 154,540           | 85,303            | 90,000            |
| Family Court                                | 1,467,948         | 1,328,486         | 1,253,012         |
| <b>Federal Funds Total</b>                  | <b>1,872,594</b>  | <b>1,626,574</b>  | <b>1,445,452</b>  |
| Supreme Court                               | 1,188,446         | 1,252,257         | 1,302,005         |
| Superior Court                              | -                 | -                 | 287,000           |
| District Court                              | -                 | 264,916           | 639,193           |
| Workers' Compensation Court                 | 7,205,888         | 7,279,316         | 7,578,922         |
| <b>Restricted Receipts Total</b>            | <b>8,394,334</b>  | <b>8,796,489</b>  | <b>9,807,120</b>  |
| Supreme Court                               | 1,438,736         | 1,704,163         | 825,000           |
| <b>Other Funds Total</b>                    | <b>1,438,736</b>  | <b>1,704,163</b>  | <b>825,000</b>    |
| <b>Grand Total</b>                          | <b>94,505,515</b> | <b>93,789,465</b> | <b>95,984,801</b> |
| Percent of State Budget                     | 1.77%             | 1.44%             | 1.23%             |
| <b>Percent of State Budget General Fund</b> | <b>2.43%</b>      | <b>2.72%</b>      | <b>2.80%</b>      |

### REVENUE DATA

| Description                            | Type          | FY 2009           | Calendar Year 2009 |
|--|---------------|-------------------|--------------------|
| Supreme Court                          | Fees          | 14,377            | 14,817             |
| Superior Court                         | Fines         | 89,321            | 88,686             |
|  | Fees          | 1,640,279         | 1,595,419          |
| Family Court                           | Fees          | 479,545           | 483,163            |
| District Court                         | Fines         | 2,850,618         | 2,676,996          |
|  | Fees          | 2,097,345         | 2,211,008          |
| Traffic Tribunal                       | Fines         | 12,103,251        | 11,554,585         |
| Probation and Parole                   | Fines         | 1,666,788         | 1,736,017          |
| Warrant Fees                           | Fines         | 511,924           | 531,754            |
| Writ of Execution                      | Fees          | 181,858           | 182,754            |
| Miscellaneous Judicial Revenue         | Miscellaneous | 709,203           | 707,331            |
| Domestic Violence Fines                | Fines         | 52,437            | 52,416             |
| Sex Offenders Fines                    | Fines         | 1,560             | 1,545              |
| Department of Health                   | Fines         | 387,638           | 406,694            |
| State Fire Marshal                     | Fines         | 1,250             | 250                |
| <b>Total General Fund</b>              |               | <b>22,787,395</b> | <b>22,243,435</b>  |
| Department of Labor and Training       | Fines         | 153,240           | 151,690            |
| Disciplinary Counsel                   | Fees          | 1,709,635         | 1,180,915          |
| Department of Environmental Management | Fines         | 371               | 555                |
| Violent Crimes Compensation            | Fines         | 1,598,992         | 1,716,793          |
| <b>Total Restricted Receipt</b>        |               | <b>3,462,238</b>  | <b>3,049,953</b>   |
| Rhode Island Legal Services            | Fees          | 96,723            | 93,086             |
| Municipalities                         | Fines         | 1,965,397         | 1,960,131          |
| <b>Other Total</b>                     |               | <b>2,062,121</b>  | <b>2,053,217</b>   |
| <b>Grand Total</b>                     |               | <b>28,311,754</b> | <b>27,346,605</b>  |

## AT A GLANCE continued

| JUDGES                  | EMPLOYEES        | FACILITIES                   |
|-------------------------|------------------|------------------------------|
| 65 Judges (4 vacancies) | FTE Count        | 6 Courthouses                |
| 4 Minorities            | 729.3 authorized | (2 administrative buildings) |
| 22 Female               | 677.7 filled     | 74 Courtrooms                |
| 21 Magistrates          |                  | (5 shelled courtrooms,       |
| 7 Female                |                  | 4 Grand Jury rooms)          |

## JUDICIARY'S CASELOAD SUMMARY

| COURT                                 | CASE TYPE               | FILING/ HEARINGS | DISPOSITIONS   |
|---------------------------------------|-------------------------|------------------|----------------|
| Supreme Court                         | Appeals                 | 366              | 302            |
|                                       | Appellate Mediation     | 89               | 37             |
| Superior Court                        | Felony                  | 5,156            | 5,370          |
|                                       | Misdemeanor             | 217              | 238            |
|                                       | Civil                   | 10,778           | 7,285          |
| Family Court                          | Juvenile                | 9,350            | 10,325         |
|                                       | Divorce                 | 3,721            | 3,809          |
|                                       | Miscellaneous Petitions | 749              |                |
|                                       | Abuse                   | 2,292            | 2,328          |
|                                       | Child Support           | *6,284           |                |
|                                       | Support Hearings        | **22,926         |                |
| District Court                        | Misdemeanors            | 26,601           | 24,350         |
|                                       | Small Claims            | 19,218           | 20,975         |
|                                       | Civil                   | 23,805           | 20,147         |
|                                       | Abuse                   | 979              |                |
|                                       | Mental Health/Other     | 729              |                |
|                                       | Administrative Appeals  | 211              |                |
| Workers' Compensation Court           |                         | 7,712            | 7,652          |
| Traffic Tribunal                      |                         | 85,790           | 89,841         |
| <b>Total Filings and Dispositions</b> |                         | <b>204,047</b>   | <b>192,659</b> |
| Including Support                     |                         | 226,973          |                |

\* Reciprocal filings stay open until age of majority of child unless otherwise ordered by court.

\*\* Support hearings represent the number of hearings held. Therefore, the same case may be counted more than once.

## SUPREME COURT APPELLATE CASELOAD

| <b>Criminal</b>      | <b>2005</b> | <b>2006</b> | <b>2007</b> | <b>2008</b> | <b>2009</b> |
|----------------------|-------------|-------------|-------------|-------------|-------------|
| Docketed             | 69          | 64          | 74          | 54          | 63          |
| Disposed             | 71          | 71          | 70          | 61          | 68          |
| Pending              | 125         | 129         | 134         | 129         | 119         |
| <b>Civil</b>         | <b>2005</b> | <b>2006</b> | <b>2007</b> | <b>2008</b> | <b>2009</b> |
| Docketed             | 157         | 157         | 147         | 127         | 159         |
| Disposed             | 159         | 155         | 153         | 128         | 147         |
| Pending              | 222         | 237         | 223         | 221         | 215         |
| <b>Certiorari</b>    | <b>2005</b> | <b>2006</b> | <b>2007</b> | <b>2008</b> | <b>2009</b> |
| Docketed             | 80          | 83          | 100         | 76          | 67          |
| Disposed             | 88          | 63          | 88          | 82          | 69          |
| Pending              | 63          | 110         | 96          | 87          | 77          |
| <b>Miscellaneous</b> | <b>2005</b> | <b>2006</b> | <b>2007</b> | <b>2008</b> | <b>2009</b> |
| Docketed             | 38          | 37          | 37          | 66          | 77          |
| Disposed             | 40          | 31          | 42          | 48          | 55          |
| Pending              | 32          | 51          | 39          | 58          | 69          |
| <b>All Cases</b>     | <b>2005</b> | <b>2006</b> | <b>2007</b> | <b>2008</b> | <b>2009</b> |
| Docketed             | 344         | 341         | 358         | 323         | 366         |
| Disposed             | 358         | 320         | 353         | 319         | 339         |
| Pending              | 442         | 527         | 492         | 495         | 480         |

## SUPREME COURT MANNER OF DISPOSITION

| <b>Before Argument</b>                           | <b>2005</b> | <b>2006</b> | <b>2007</b> | <b>2008</b> | <b>2009</b> |
|--|-------------|-------------|-------------|-------------|-------------|
| Withdrawn  | 60          | 57          | 76          | 62          | 71          |
| Dismissed  | 27          | 20          | 37          | 20          | 26          |
| Petition Granted                                 | 6           | 4           | 10          | 8           | 12          |
| Petition Denied                                  | 73          | 53          | 67          | 69          | 39          |
| Other  | 24          | 17          | 39          | 31          | 33          |
| <b>Total</b>                                     | <b>190</b>  | <b>151</b>  | <b>229</b>  | <b>190</b>  | <b>181</b>  |
| <b>After Argument/<br/>Motion Calendar</b>       | <b>2005</b> | <b>2006</b> | <b>2007</b> | <b>2008</b> | <b>2009</b> |
| Withdrawn  | 0           | 2           | 1           | 1           | 3           |
| Affirmed   | 65          | 78          | 53          | 49          | 69          |
| Modified   | 4           | 4           | 3           | 2           | 1           |
| Reversed   | 16          | 8           | 12          | 8           | 13          |
| Other  | 6           | 2           | 2           | 4           | 5           |
| Orders   | 20          | 38          | 27          | 13          | 21          |
| Opinions   | 71          | 56          | 44          | 51          | 70          |
| <b>Total</b>                                     | <b>91</b>   | <b>94</b>   | <b>71</b>   | <b>64</b>   | <b>91</b>   |
| <b>After Argument/Merits</b>                     | <b>2005</b> | <b>2006</b> | <b>2007</b> | <b>2008</b> | <b>2009</b> |
| Withdrawn  | 1           | 6           | 1           | 3           | 0           |
| Affirmed   | 41          | 48          | 31          | 42          | 39          |
| Modified   | 12          | 1           | 7           | 2           | 6           |
| Reversed   | 22          | 20          | 13          | 16          | 21          |
| Other  | 1           | 0           | 1           | 2           | 1           |
| Orders   | 5           | 7           | 2           | 7           | 7           |
| Opinions   | 72          | 68          | 51          | 58          | 60          |
| <b>Total</b>                                     | <b>77</b>   | <b>75</b>   | <b>53</b>   | <b>65</b>   | <b>67</b>   |
| <b>Total Dispositions</b>                        | <b>358</b>  | <b>320</b>  | <b>353</b>  | <b>319</b>  | <b>339</b>  |
| % Disposed of<br>Within 300 Days<br>of Docketing | 48%         | 38%         | 48%         | 52%         | 44%         |



## SUPERIOR COURT CIVIL CASELOAD

| <b>CIVIL ACTIONS</b>                  |             |             |             |             |             |
|---------------------------------------|-------------|-------------|-------------|-------------|-------------|
| <b>Providence/<br/>Bristol County</b> | <b>2005</b> | <b>2006</b> | <b>2007</b> | <b>2008</b> | <b>2009</b> |
| Cases Filed                           | 6,689       | 6,696       | 6,913       | 8,433       | 7,458       |
| Cases Disposed                        | 4,120       | 4,360       | 4,335       | 4,750       | 4,774       |
| <i>Trial Calendar Summary</i>         |             |             |             |             |             |
| Cases Added                           | 1,460       | 1,409       | 1,189       | 1,336       | 1,216       |
| Cases Disposed                        | 1,443       | 1,408       | 1,291       | 1,321       | 1,152       |
| Pending at Year-End                   | 1,428       | 1,573       | 1,559       | 1,556       | 1,585       |
| <b>Kent County</b>                    | <b>2005</b> | <b>2006</b> | <b>2007</b> | <b>2008</b> | <b>2009</b> |
| Cases Filed                           | 1,168       | 1,208       | 1,355       | 1,761       | 1,729       |
| Cases Disposed                        | 920         | 911         | 953         | 1,164       | 1,158       |
| <i>Trial Calendar Summary</i>         |             |             |             |             |             |
| Cases Added                           | 312         | 309         | 272         | 321         | 289         |
| Cases Disposed                        | 426         | 433         | 367         | 323         | 324         |
| Pending at Year-End                   | 150         | 132         | 152         | 173         | 182         |
| <b>Washington County</b>              | <b>2005</b> | <b>2006</b> | <b>2007</b> | <b>2008</b> | <b>2009</b> |
| Cases Filed                           | 772         | 765         | 866         | 939         | 892         |
| Cases Disposed                        | 604         | 614         | 656         | 693         | 697         |
| <i>Trial Calendar Summary</i>         |             |             |             |             |             |
| Cases Added                           | 214         | 181         | 188         | 179         | 169         |
| Cases Disposed                        | 265         | 257         | 230         | 202         | 163         |
| Pending at Year-End                   | 177         | 147         | 132         | 142         | 159         |
| <b>Newport County</b>                 | <b>2005</b> | <b>2006</b> | <b>2007</b> | <b>2008</b> | <b>2009</b> |
| Cases Filed                           | 586         | 630         | 677         | 722         | 699         |
| Cases Disposed                        | 581         | 483         | 420         | 542         | 656         |
| <i>Trial Calendar Summary</i>         |             |             |             |             |             |
| Cases Added                           | 158         | 152         | 142         | 148         | 107         |
| Cases Disposed                        | 252         | 160         | 154         | 159         | 175         |
| Pending at Year-End                   | 107         | 123         | 124         | 146         | 96          |
| <b>Statewide</b>                      | <b>2005</b> | <b>2006</b> | <b>2007</b> | <b>2008</b> | <b>2009</b> |
| Cases Filed                           | 9,215       | 9,299       | 9,811       | 11,855      | 10,778      |
| Cases Disposed                        | 6,225       | 6,368       | 6,364       | 7,149       | 7,285       |
| <i>Trial Calendar Summary</i>         |             |             |             |             |             |
| Cases Added                           | 2,144       | 2,051       | 1,791       | 1,984       | 1,781       |
| Cases Disposed                        | 2,386       | 2,258       | 2,042       | 2,005       | 1,814       |
| Pending at Year-End                   | 1,862       | 1,975       | 1,967       | 2,017       | 2,022       |

## SUPERIOR COURT MANNER OF DISPOSITION CIVIL TRIAL CALENDAR

| <b>CIVIL ACTIONS</b>                                       |             |             |             |             |             |
|--|-------------|-------------|-------------|-------------|-------------|
| <b>Providence/<br/>Bristol County</b>                      | <b>2005</b> | <b>2006</b> | <b>2007</b> | <b>2008</b> | <b>2009</b> |
| Verdicts   | 25          | 23          | 21          | 10          | 5           |
| Judicial Decisions   | 17          | 7           | 7           | 6           | 5           |
| Total Trials   | 42          | 30          | 28          | 16          | 10          |
| Dismissed/Settled/Other<br>Arbitration/Other<br>Exceptions | 1,240       | 944         | 902         | 857         | 755         |
| Total Disposed   | 1,443       | 1,408       | 1,291       | 1,321       | 1,152       |
| <b>Kent County</b>   | <b>2005</b> | <b>2006</b> | <b>2007</b> | <b>2008</b> | <b>2009</b> |
| Verdicts   | 14          | 4           | 4           | 0           | 0           |
| Judicial Decisions   | 15          | 5           | 2           | 1           | 9           |
| Total Trials   | 29          | 9           | 6           | 1           | 9           |
| Dismissed/Settled/Other<br>Arbitration/Other<br>Exceptions | 359         | 332         | 255         | 231         | 235         |
| Total Disposed   | 426         | 433         | 367         | 323         | 324         |
| <b>Washington County</b>                                   | <b>2005</b> | <b>2006</b> | <b>2007</b> | <b>2008</b> | <b>2009</b> |
| Verdicts   | 17          | 8           | 9           | 5           | 2           |
| Judicial Decisions   | 6           | 4           | 6           | 5           | 2           |
| Total Trials   | 23          | 12          | 15          | 10          | 4           |
| Dismissed/Settled/Other<br>Arbitration/Other<br>Exceptions | 225         | 186         | 155         | 125         | 119         |
| Total Disposed   | 265         | 257         | 230         | 202         | 163         |
| <b>Newport County</b>                                      | <b>2005</b> | <b>2006</b> | <b>2007</b> | <b>2008</b> | <b>2009</b> |
| Verdicts   | 6           | 11          | 2           | 1           | 4           |
| Judicial Decisions   | 10          | 7           | 10          | 8           | 8           |
| Total Trials   | 16          | 18          | 12          | 9           | 12          |
| Dismissed/Settled/Other<br>Arbitration/Other<br>Exceptions | 227         | 116         | 121         | 123         | 134         |
| Total Disposed   | 252         | 160         | 154         | 159         | 175         |
| <b>Statewide</b>   | <b>2005</b> | <b>2006</b> | <b>2007</b> | <b>2008</b> | <b>2009</b> |
| Verdicts   | 62          | 46          | 36          | 16          | 11          |
| Judicial Decisions   | 48          | 23          | 25          | 20          | 24          |
| Total Trials   | 110         | 69          | 61          | 36          | 35          |
| Dismissed/Settled/Other<br>Arbitration/Other<br>Exceptions | 2,051       | 1,578       | 1,433       | 1,336       | 1,243       |
| Total Disposed   | 2,386       | 2,258       | 2,042       | 2,005       | 1,814       |

## SUPERIOR COURT FELONY CASELOAD

| <b>FELONIES</b>                       |             |             |             |             |             |
|---------------------------------------|-------------|-------------|-------------|-------------|-------------|
| <b>Providence/<br/>Bristol County</b> | <b>2005</b> | <b>2006</b> | <b>2007</b> | <b>2008</b> | <b>2009</b> |
| Cases Filed                           | 3,909       | 4,293       | 4,521       | 4,060       | 3,716       |
| Cases Disposed                        | 4,010       | 4,267       | 4,429       | 4,171       | 3,964       |
| Total Pending Cases                   | 1,791       | 1,843       | 1,708       | 2,075       | 2,232       |
| % Over 180 Days Old                   | 50%         | 43%         | 44%         | 47%         | 52%         |
| <b>Kent County</b>                    | <b>2005</b> | <b>2006</b> | <b>2007</b> | <b>2008</b> | <b>2009</b> |
| Cases Filed                           | 745         | 765         | 676         | 676         | 776         |
| Cases Disposed                        | 939         | 707         | 760         | 712         | 712         |
| Total Pending Cases                   | 199         | 254         | 154         | 123         | 191         |
| % Over 180 Days Old                   | 22%         | 34%         | 31%         | 20%         | 23%         |
| <b>Washington County</b>              | <b>2005</b> | <b>2006</b> | <b>2007</b> | <b>2008</b> | <b>2009</b> |
| Cases Filed                           | 434         | 571         | 453         | 438         | 389         |
| Cases Disposed                        | 413         | 557         | 490         | 446         | 403         |
| Total Pending Cases                   | 127         | 126         | 104         | 118         | 129         |
| % Over 180 Days Old                   | 17%         | 27%         | 19%         | 26%         | 16%         |
| <b>Newport County</b>                 | <b>2005</b> | <b>2006</b> | <b>2007</b> | <b>2008</b> | <b>2009</b> |
| Cases Filed                           | 421         | 332         | 296         | 325         | 275         |
| Cases Disposed                        | 347         | 351         | 275         | 292         | 291         |
| Total Pending Cases                   | 99          | 89          | 109         | 115         | 108         |
| % Over 180 Days Old                   | 9%          | 22%         | 18%         | 30%         | 41%         |
| <b>Statewide</b>                      | <b>2005</b> | <b>2006</b> | <b>2007</b> | <b>2008</b> | <b>2009</b> |
| Cases Filed                           | 5,509       | 5,961       | 5,946       | 5,499       | 5,156       |
| Cases Disposed                        | 5,709       | 5,882       | 5,954       | 5,621       | 5,370       |
| Total Pending Cases                   | 2,216       | 2,312       | 2,075       | 2,431       | 2,660       |
| % Over 180 Days Old                   | 44%         | 40%         | 40%         | 44%         | 47%         |

## SUPERIOR COURT MANNER OF DISPOSITION FELONIES

| <b>FELONIES</b>                            |             |             |             |             |             |
|--|-------------|-------------|-------------|-------------|-------------|
| <b>Providence/<br/>Bristol County</b>      | <b>2005</b> | <b>2006</b> | <b>2007</b> | <b>2008</b> | <b>2009</b> |
| Pled                                       | 3,624       | 3,936       | 4,078       | 3,843       | 3,532       |
| Filed                                      | 8           | 1           | 1           | 2           | 15          |
| Dismissed                                  | 338         | 264         | 300         | 281         | 369         |
| Trial                                      | 40          | 66          | 49          | 45          | 42          |
| Other                                      | 0           | 0           | 1           | 0           | 6           |
| Total                                      | 4,010       | 4,267       | 4,429       | 4,171       | 3,964       |
| % Disposed of Within<br>180 Days of Filing | 68%         | 70%         | 72%         | 62%         | 64%         |
| <b>Kent County</b>                         | <b>2005</b> | <b>2006</b> | <b>2007</b> | <b>2008</b> | <b>2009</b> |
| Pled                                       | 679         | 650         | 713         | 642         | 666         |
| Filed                                      | 18          | 17          | 0           | 1           | 3           |
| Dismissed                                  | 237         | 33          | 35          | 56          | 34          |
| Trial                                      | 5           | 7           | 11          | 13          | 9           |
| Other                                      | 0           | 0           | 1           | 0           | 0           |
| Total                                      | 939         | 707         | 760         | 712         | 712         |
| % Disposed of Within<br>180 Days of Filing | 66%         | 83%         | 80%         | 80%         | 86%         |
| <b>Washington County</b>                   | <b>2005</b> | <b>2006</b> | <b>2007</b> | <b>2008</b> | <b>2009</b> |
| Pled                                       | 354         | 490         | 438         | 393         | 362         |
| Filed                                      | 11          | 7           | 1           | 0           | 1           |
| Dismissed                                  | 36          | 42          | 47          | 50          | 34          |
| Trial                                      | 10          | 14          | 4           | 3           | 6           |
| Other                                      | 2           | 4           | 0           | 0           | 0           |
| Total                                      | 413         | 557         | 490         | 446         | 403         |
| % Disposed of Within<br>180 Days of Filing | 86%         | 82%         | 81%         | 79%         | 76%         |
| <b>Newport County</b>                      | <b>2005</b> | <b>2006</b> | <b>2007</b> | <b>2008</b> | <b>2009</b> |
| Pled                                       | 289         | 298         | 249         | 254         | 228         |
| Filed                                      | 10          | 10          | 6           | 3           | 6           |
| Dismissed                                  | 42          | 35          | 18          | 29          | 52          |
| Trial                                      | 6           | 7           | 2           | 6           | 5           |
| Other                                      | 0           | 1           | 0           | 0           | 0           |
| Total                                      | 347         | 351         | 275         | 292         | 291         |
| % Disposed of Within<br>180 Days of Filing | 80%         | 86%         | 77%         | 76%         | 70%         |
| <b>Statewide</b>                           | <b>2005</b> | <b>2006</b> | <b>2007</b> | <b>2008</b> | <b>2009</b> |
| Pled                                       | 4,946       | 5,374       | 5,478       | 5,132       | 4,788       |
| Filed                                      | 47          | 35          | 8           | 6           | 25          |
| Dismissed                                  | 653         | 374         | 400         | 416         | 489         |
| Trial                                      | 61          | 94          | 66          | 67          | 62          |
| Other                                      | 2           | 5           | 2           | 0           | 6           |
| Total                                      | 5,709       | 5,882       | 5,954       | 5,621       | 5,370       |
| % Disposed of Within<br>180 Days of Filing | 70%         | 74%         | 74%         | 67%         | 69%         |

## SUPERIOR COURT MISDEMEANOR CASELOAD

| <b>MISDEMEANORS</b>                   |             |             |             |             |             |
|---------------------------------------|-------------|-------------|-------------|-------------|-------------|
| <b>Providence/<br/>Bristol County</b> | <b>2005</b> | <b>2006</b> | <b>2007</b> | <b>2008</b> | <b>2009</b> |
| Cases Filed                           | 173         | 155         | 149         | 132         | 87          |
| Cases Disposed                        | 117         | 101         | 93          | 211         | 127         |
| Total Pending Cases                   | 59          | 91          | 111         | 142         | 118         |
| % Over 90 Days Old                    | 83%         | 66%         | 74%         | 80%         | 86%         |
| <b>Kent County</b>                    | <b>2005</b> | <b>2006</b> | <b>2007</b> | <b>2008</b> | <b>2009</b> |
| Cases Filed                           | 47          | 38          | 56          | 42          | 25          |
| Cases Disposed                        | 45          | 52          | 50          | 53          | 25          |
| Total Pending Cases                   | 23          | 9           | 15          | 10          | 8           |
| % Over 90 Days Old                    | 52%         | 89%         | 53%         | 50%         | 38%         |
| <b>Washington County</b>              | <b>2005</b> | <b>2006</b> | <b>2007</b> | <b>2008</b> | <b>2009</b> |
| Cases Filed                           | 41          | 47          | 36          | 23          | 30          |
| Cases Disposed                        | 53          | 60          | 30          | 26          | 24          |
| Total Pending Cases                   | 12          | 4           | 8           | 5           | 11          |
| % Over 90 Days Old                    | 33%         | 0%          | 13%         | 60%         | 55%         |
| <b>Newport County</b>                 | <b>2005</b> | <b>2006</b> | <b>2007</b> | <b>2008</b> | <b>2009</b> |
| Cases Filed                           | 13          | 32          | 46          | 43          | 75          |
| Cases Disposed                        | 30          | 25          | 29          | 52          | 62          |
| Total Pending Cases                   | 2           | 10          | 17          | 15          | 16          |
| % Over 90 Days Old                    | 0%          | 0%          | 53%         | 73%         | 56%         |
| <b>Statewide</b>                      | <b>2005</b> | <b>2006</b> | <b>2007</b> | <b>2008</b> | <b>2009</b> |
| Cases Filed                           | 274         | 272         | 287         | 240         | 217         |
| Cases Disposed                        | 245         | 238         | 202         | 342         | 238         |
| Total Pending Cases                   | 96          | 114         | 151         | 172         | 153         |
| % Over 90 Days Old                    | 68%         | 60%         | 66%         | 77%         | 78%         |

## SUPERIOR COURT MANNER OF DISPOSITION MISDEMEANORS

| <b>MISDEMEANORS</b>                       |             |             |             |             |             |
|---|-------------|-------------|-------------|-------------|-------------|
| <b>Providence/<br/>Bristol County</b>     | <b>2005</b> | <b>2006</b> | <b>2007</b> | <b>2008</b> | <b>2009</b> |
| Pled                                      | 74          | 65          | 58          | 167         | 88          |
| Filed                                     | 8           | 6           | 10          | 3           | 11          |
| Dismissed                                 | 30          | 27          | 19          | 21          | 26          |
| Trial                                     | 5           | 3           | 6           | 20          | 2           |
| Other                                     | 0           | 0           | 0           | 0           | 0           |
| Total                                     | 117         | 101         | 93          | 211         | 127         |
| % Disposed of Within<br>90 Days of Filing | 28%         | 24%         | 19%         | 22%         | 18%         |
| <b>Kent County</b>                        | <b>2005</b> | <b>2006</b> | <b>2007</b> | <b>2008</b> | <b>2009</b> |
| Pled                                      | 21          | 32          | 34          | 42          | 15          |
| Filed                                     | 7           | 11          | 1           | 1           | 2           |
| Dismissed                                 | 17          | 7           | 12          | 8           | 6           |
| Trial                                     | 0           | 1           | 2           | 2           | 1           |
| Other                                     | 0           | 1           | 1           | 0           | 1           |
| Total                                     | 45          | 52          | 50          | 53          | 25          |
| % Disposed of Within<br>90 Days of Filing | 47%         | 67%         | 73%         | 51%         | 83%         |
| <b>Washington County</b>                  | <b>2005</b> | <b>2006</b> | <b>2007</b> | <b>2008</b> | <b>2009</b> |
| Pled                                      | 37          | 33          | 23          | 19          | 15          |
| Filed                                     | 3           | 9           | 0           | 1           | 3           |
| Dismissed                                 | 10          | 16          | 6           | 4           | 5           |
| Trial                                     | 2           | 0           | 0           | 0           | 1           |
| Other                                     | 1           | 2           | 1           | 2           | 0           |
| Total                                     | 53          | 60          | 30          | 26          | 24          |
| % Disposed of Within<br>90 Days of Filing | 81%         | 81%         | 90%         | 89%         | 83%         |
| <b>Newport County</b>                     | <b>2005</b> | <b>2006</b> | <b>2007</b> | <b>2008</b> | <b>2009</b> |
| Pled                                      | 11          | 7           | 12          | 35          | 31          |
| Filed                                     | 4           | 2           | 2           | 2           | 8           |
| Dismissed                                 | 14          | 13          | 9           | 9           | 18          |
| Trial                                     | 1           | 0           | 2           | 3           | 5           |
| Other                                     | 0           | 3           | 4           | 3           | 0           |
| Total                                     | 30          | 25          | 29          | 52          | 62          |
| % Disposed of Within<br>90 Days of Filing | 33%         | 85%         | 89%         | 47%         | 67%         |
| <b>Statewide</b>                          | <b>2005</b> | <b>2006</b> | <b>2007</b> | <b>2008</b> | <b>2009</b> |
| Pled                                      | 143         | 137         | 127         | 263         | 149         |
| Filed                                     | 22          | 28          | 13          | 7           | 24          |
| Dismissed                                 | 71          | 63          | 46          | 42          | 55          |
| Trial                                     | 8           | 4           | 10          | 25          | 9           |
| Other                                     | 1           | 6           | 6           | 5           | 1           |
| Total                                     | 245         | 238         | 202         | 342         | 238         |
| % Disposed of Within<br>90 Days of Filing | 41%         | 50%         | 47%         | 41%         | 46%         |

## FAMILY COURT DOMESTIC RELATIONS

| <b>DOMESTIC</b>                       |             |             |             |             |             |
|---------------------------------------|-------------|-------------|-------------|-------------|-------------|
| <b>Providence/<br/>Bristol County</b> | <b>2005</b> | <b>2006</b> | <b>2007</b> | <b>2008</b> | <b>2009</b> |
| Filed                                 | 3,096       | 3,062       | 2,935       | 2,995       | 2,875       |
| Filed - Divorce Only                  | 2,630       | 2,558       | 2,479       | 2,472       | 2,382       |
| Disposed                              | 2,761       | 2,457       | 2,542       | 2,433       | 2,454       |
| Cases Greater than<br>360 Days Old    | 3           | 19          | 15          | 37          | 28          |
| <b>Kent County</b>                    | <b>2005</b> | <b>2006</b> | <b>2007</b> | <b>2008</b> | <b>2009</b> |
| Filed                                 | 805         | 763         | 761         | 764         | 758         |
| Filed - Divorce Only                  | 714         | 678         | 666         | 671         | 648         |
| Disposed                              | 729         | 735         | 710         | 672         | 647         |
| Cases Greater than<br>360 Days Old    | 7           | 10          | 0           | 3           | 3           |
| <b>Washington County</b>              | <b>2005</b> | <b>2006</b> | <b>2007</b> | <b>2008</b> | <b>2009</b> |
| Filed                                 | 561         | 577         | 505         | 503         | 520         |
| Filed - Divorce Only                  | 483         | 509         | 444         | 421         | 423         |
| Disposed                              | 549         | 460         | 480         | 456         | 429         |
| Cases Greater than<br>360 Days Old    | 0           | 0           | 0           | 2           | 2           |
| <b>Newport County</b>                 | <b>2005</b> | <b>2006</b> | <b>2007</b> | <b>2008</b> | <b>2009</b> |
| Filed                                 | 329         | 377         | 348         | 334         | 317         |
| Filed - Divorce Only                  | 263         | 316         | 289         | 276         | 268         |
| Disposed                              | 292         | 315         | 271         | 285         | 279         |
| Cases Greater than<br>360 Days Old    | 10          | 8           | 9           | 4           | 0           |
| <b>Statewide</b>                      | <b>2005</b> | <b>2006</b> | <b>2007</b> | <b>2008</b> | <b>2009</b> |
| Filed                                 | 4,791       | 4,779       | 4,549       | 4,596       | 4,470       |
| Filed - Divorce Only                  | 4,090       | 4,061       | 3,878       | 3,840       | 3,721       |
| Disposed                              | 4,331       | 3,967       | 4,003       | 3,846       | 3,809       |
| Cases Greater than<br>360 Days Old    | 20          | 37          | 24          | 46          | 33          |
| <b>Abuse Complaint Filed</b>          | <b>2005</b> | <b>2006</b> | <b>2007</b> | <b>2008</b> | <b>2009</b> |
| Providence/Bristol County             | 1,736       | 1,806       | 1,669       | 1,705       | 1,724       |
| Kent County                           | 316         | 328         | 373         | 328         | 364         |
| Washington County                     | 112         | 88          | 94          | 87          | 101         |
| Newport County                        | 77          | 86          | 97          | 105         | 103         |
| Statewide Total                       | 2,241       | 2,308       | 2,233       | 2,225       | 2,292       |
| <b>Support Petitions Filed</b>        | <b>2005</b> | <b>2006</b> | <b>2007</b> | <b>2008</b> | <b>2009</b> |
| Support Petitions Filed               | 4,551       | 5,307       | 5,442       | 4,697       | 6,284       |

## FAMILY COURT JUVENILE CASELOAD

| <b>JUVENILE FILINGS BY CATEGORY</b>                           |             |             |             |             |             |
|---|-------------|-------------|-------------|-------------|-------------|
|   | <b>2005</b> | <b>2006</b> | <b>2007</b> | <b>2008</b> | <b>2009</b> |
| Wayward/Delinquent  | 7,018       | 7,125       | 6,527       | 6,713       | 6,065       |
| Dependency/Neglect/<br>Abuse                                  | 2,162       | 2,590       | 1,692       | 1,705       | 1,591       |
| Termination of<br>Parental Rights                             | 424         | 348         | 371         | 369         | 301         |
| Adoption/Guardianship<br>Violations                           | 599         | 541         | 484         | 492         | 467         |
| Other   | 938         | 1,045       | 1,130       | 1,029       | 874         |
| Total Filings   | 68          | 74          | 60          | 62          | 52          |
|   | 11,209      | 11,723      | 10,264      | 10,370      | 9,350       |
| <b>JUVENILE CALENDAR RESULTS FOR WAYWARD/DELINQUENT CASES</b> |             |             |             |             |             |
| <b>Providence/<br/>Bristol County</b>                         | <b>2005</b> | <b>2006</b> | <b>2007</b> | <b>2008</b> | <b>2009</b> |
| Filed   | 5,537       | 5,706       | 5,517       | 5,370       | 4,792       |
| Disposed  | 5,141       | 5,378       | 5,585       | 5,469       | 5,256       |
| % Adjudicated Within<br>180 Days of Filing                    | 75%         | 75%         | 74%         | 73%         | 68%         |
| <b>Kent County</b>  | <b>2005</b> | <b>2006</b> | <b>2007</b> | <b>2008</b> | <b>2009</b> |
| Filed   | 1,289       | 1,241       | 1,149       | 1,215       | 1,017       |
| Disposed  | 1,175       | 1,303       | 1,247       | 1,226       | 1,167       |
| % Adjudicated Within<br>180 Days of Filing                    | 57%         | 57%         | 65%         | 65%         | 66%         |
| <b>Washington County</b>                                      | <b>2005</b> | <b>2006</b> | <b>2007</b> | <b>2008</b> | <b>2009</b> |
| Filed   | 728         | 708         | 561         | 674         | 667         |
| Disposed  | 588         | 689         | 623         | 607         | 685         |
| % Adjudicated Within<br>180 Days of Filing                    | 76%         | 76%         | 66%         | 78%         | 73%         |
| <b>Newport County</b>   | <b>2005</b> | <b>2006</b> | <b>2007</b> | <b>2008</b> | <b>2009</b> |
| Filed   | 402         | 515         | 430         | 483         | 463         |
| Disposed  | 407         | 443         | 480         | 507         | 432         |
| % Adjudicated Within<br>180 Days of Filing                    | 61%         | 69%         | 63%         | 72%         | 69%         |
| <b>Statewide</b>  | <b>2005</b> | <b>2006</b> | <b>2007</b> | <b>2008</b> | <b>2009</b> |
| Filed   | 7,956       | 8,170       | 7,657       | 7,742       | 6,939       |
| Disposed  | 7,311       | 7,813       | 7,935       | 7,809       | 7,540       |
| % Adjudicated Within<br>180 Days of Filing                    | 72%         | 72%         | 71%         | 72%         | 68%         |

## FAMILY COURT CHILD PROTECTION

### JUVENILE CALENDAR RESULTS FOR CHILD PROTECTION CASES

| <b>Providence/ Bristol County</b>       | <b>2005</b> | <b>2006</b> | <b>2007</b> | <b>2008</b> | <b>2009</b> |
|---|-------------|-------------|-------------|-------------|-------------|
| <b>TERMINATION OF PARENTAL RIGHTS</b>   |             |             |             |             |             |
| Filed                                   | 338         | 273         | 290         | 299         | 259         |
| Disposed                                | 269         | 296         | 341         | 324         | 309         |
| % Adjudicated Within 180 Days of Filing | 68%         | 67%         | 53%         | 74%         | 69%         |
| <b>DEPENDENCY/NEGLECT/ ABUSE</b>        |             |             |             |             |             |
| Filed                                   | 1,626       | 1,915       | 1,250       | 1,266       | 1,167       |
| Disposed                                | 1,311       | 1,704       | 1,712       | 1,634       | 1,425       |
| % Adjudicated Within 180 Days of Filing | 59%         | 52%         | 39%         | 42%         | 46%         |
| <b>OTHER</b>                            |             |             |             |             |             |
| Filed                                   | 441         | 404         | 389         | 378         | 359         |
| Disposed                                | 373         | 431         | 373         | 385         | 386         |
| <b>Kent County</b>                      | <b>2005</b> | <b>2006</b> | <b>2007</b> | <b>2008</b> | <b>2009</b> |
| <b>TERMINATION OF PARENTAL RIGHTS</b>   |             |             |             |             |             |
| Filed                                   | 48          | 39          | 50          | 43          | 22          |
| Disposed                                | 36          | 51          | 28          | 46          | 57          |
| % Adjudicated Within 180 Days of Filing | 31%         | 24%         | 59%         | 76%         | 92%         |
| <b>DEPENDENCY/NEGLECT/ ABUSE</b>        |             |             |             |             |             |
| Filed                                   | 284         | 352         | 243         | 192         | 222         |
| Disposed                                | 254         | 337         | 263         | 242         | 185         |
| % Adjudicated Within 180 Days of Filing | 57%         | 51%         | 57%         | 73%         | 50%         |
| <b>OTHER</b>                            |             |             |             |             |             |
| Filed                                   | 108         | 105         | 81          | 110         | 92          |
| Disposed                                | 116         | 97          | 83          | 106         | 98          |
| <b>Washington County</b>                | <b>2005</b> | <b>2006</b> | <b>2007</b> | <b>2008</b> | <b>2009</b> |
| <b>TERMINATION OF PARENTAL RIGHTS</b>   |             |             |             |             |             |
| Filed                                   | 15          | 16          | 12          | 11          | 4           |
| Disposed                                | 25          | 14          | 10          | 11          | 13          |
| % Adjudicated Within 180 Days of Filing | 33%         | 80%         | 33%         | 0%          | 0%          |
| <b>DEPENDENCY/NEGLECT/ ABUSE</b>        |             |             |             |             |             |
| Filed                                   | 115         | 193         | 132         | 144         | 100         |
| Disposed                                | 112         | 164         | 161         | 139         | 111         |
| % Adjudicated Within 180 Days of Filing | 49%         | 62%         | 39%         | 49%         | 48%         |
| <b>OTHER</b>                            |             |             |             |             |             |
| Filed                                   | 74          | 64          | 48          | 47          | 46          |
| Disposed                                | 67          | 68          | 38          | 59          | 46          |

| <b>Newport County</b>                   | <b>2005</b> | <b>2006</b> | <b>2007</b> | <b>2008</b> | <b>2009</b> |
|---|-------------|-------------|-------------|-------------|-------------|
| <b>TERMINATION OF PARENTAL RIGHTS</b>   |             |             |             |             |             |
| Filed                                   | 23          | 20          | 19          | 16          | 16          |
| Disposed                                | 16          | 17          | 19          | 12          | 20          |
| % Adjudicated Within 180 Days of Filing | 56%         | 57%         | 46%         | 36%         | 20%         |
| <b>DEPENDENCY/NEGLECT/ ABUSE</b>        |             |             |             |             |             |
| Filed                                   | 137         | 130         | 67          | 103         | 102         |
| Disposed                                | 108         | 115         | 96          | 102         | 115         |
| % Adjudicated Within 180 Days of Filing | 54%         | 40%         | 21%         | 29%         | 30%         |
| <b>OTHER</b>                            |             |             |             |             |             |
| Filed                                   | 44          | 42          | 26          | 19          | 22          |
| Disposed                                | 32          | 46          | 22          | 22          | 20          |
| <b>Statewide</b>                        | <b>2005</b> | <b>2006</b> | <b>2007</b> | <b>2008</b> | <b>2009</b> |
| <b>TERMINATION OF PARENTAL RIGHTS</b>   |             |             |             |             |             |
| Filed                                   | 424         | 348         | 371         | 369         | 301         |
| Disposed                                | 346         | 378         | 398         | 393         | 399         |
| % Adjudicated Within 180 Days of Filing | 60%         | 58%         | 52%         | 71%         | 67%         |
| <b>DEPENDENCY/NEGLECT/ ABUSE</b>        |             |             |             |             |             |
| Filed                                   | 2,162       | 2,590       | 1,692       | 1,705       | 1,591       |
| Disposed                                | 1,785       | 2,320       | 2,232       | 2,117       | 1,836       |
| % Adjudicated Within 180 Days of Filing | 58%         | 52%         | 41%         | 45%         | 45%         |
| <b>OTHER</b>                            |             |             |             |             |             |
| Filed                                   | 667         | 615         | 544         | 554         | 519         |
| Disposed                                | 588         | 642         | 516         | 572         | 550         |

## DISTRICT COURT SMALL CLAIMS

| <b>Second Division<br/>Newport County</b>            | <b>2005</b> | <b>2006</b> | <b>2007</b> | <b>2008</b> | <b>2009</b> |
|--|-------------|-------------|-------------|-------------|-------------|
| Cases Filed  | 895         | 808         | 831         | 957         | 521         |
| Cases Disposed                                       | 1,933       | 1,420       | 1,115       | 797         | 661         |
| <b>Third Division<br/>Kent County</b>                | <b>2005</b> | <b>2006</b> | <b>2007</b> | <b>2008</b> | <b>2009</b> |
| Cases Filed  | 2,459       | 3,133       | 6,335       | 6,564       | 9,871       |
| Cases Disposed                                       | 2,532       | 4,686       | 5,675       | 6,343       | 9,092       |
| <b>Fourth Division<br/>Washington County</b>         | <b>2005</b> | <b>2006</b> | <b>2007</b> | <b>2008</b> | <b>2009</b> |
| Cases Filed  | 1,094       | 1,152       | 1,335       | 1,500       | 1,002       |
| Cases Disposed                                       | 1,787       | 1,563       | 1,815       | 1,388       | 1,043       |
| <b>Sixth Division<br/>Providence/ Bristol County</b> | <b>2005</b> | <b>2006</b> | <b>2007</b> | <b>2008</b> | <b>2009</b> |
| Cases Filed  | 12,133      | 13,417      | 10,929      | 12,295      | 7,824       |
| Cases Disposed                                       | 15,250      | 12,706      | 10,907      | 10,312      | 10,179      |
| <b>Statewide</b>                                     | <b>2005</b> | <b>2006</b> | <b>2007</b> | <b>2008</b> | <b>2009</b> |
| Cases Filed  | 16,581      | 18,510      | 19,430      | 21,316      | 19,218      |
| Cases Disposed                                       | 21,502      | 20,375      | 19,512      | 18,840      | 20,975      |

### MANNER OF DISPOSITION

|             | <b>2005</b> | <b>2006</b> | <b>2007</b> | <b>2008</b> | <b>2009</b> |
|-------------|-------------|-------------|-------------|-------------|-------------|
| Defaults    | 11,008      | 10,275      | 10,802      | 13,678      | 13,818      |
| Settlements | 7,448       | 6,535       | 5,462       | 3,509       | 5,195       |
| Judgments   | 3,046       | 3,565       | 3,248       | 1,653       | 1,962       |
| Total       | 21,502      | 20,375      | 19,512      | 18,840      | 20,975      |

### CASES FILED - OTHER CATEGORIES

|                        | <b>2005</b> | <b>2006</b> | <b>2007</b> | <b>2008</b> | <b>2009</b> |
|------------------------|-------------|-------------|-------------|-------------|-------------|
| Domestic Abuse         | 734         | 741         | 746         | 952         | 979         |
| Administrative Appeals | 130         | 132         | 182         | 186         | 211         |
| Mental Health Hearings | 555         | 586         | 566         | 664         | 729         |

## DISTRICT COURT CIVIL CASELOAD

| <b>Second Division<br/>Newport County</b>            | <b>2005</b> | <b>2006</b> | <b>2007</b> | <b>2008</b> | <b>2009</b> |
|--|-------------|-------------|-------------|-------------|-------------|
| Cases Filed  | 1,367       | 1,150       | 1,316       | 1,413       | 1,304       |
| Cases Disposed                                       | 1,632       | 1,427       | 1,299       | 1,032       | 1,014       |
| <b>Third Division<br/>Kent County</b>                | <b>2005</b> | <b>2006</b> | <b>2007</b> | <b>2008</b> | <b>2009</b> |
| Cases Filed  | 2,343       | 3,018       | 4,917       | 6,519       | 6,678       |
| Cases Disposed                                       | 4,226       | 4,539       | 5,385       | 4,677       | 5,472       |
| <b>Fourth Division<br/>Washington County</b>         | <b>2005</b> | <b>2006</b> | <b>2007</b> | <b>2008</b> | <b>2009</b> |
| Cases Filed  | 1,116       | 1,258       | 1,631       | 1,692       | 1,707       |
| Cases Disposed                                       | 1,355       | 1,382       | 1,391       | 1,315       | 1,294       |
| <b>Sixth Division<br/>Providence/ Bristol County</b> | <b>2005</b> | <b>2006</b> | <b>2007</b> | <b>2008</b> | <b>2009</b> |
| Cases Filed  | 13,604      | 13,674      | 14,414      | 15,577      | 14,116      |
| Cases Disposed                                       | 14,010      | 15,945      | 11,126      | 12,034      | 12,367      |
| <b>Statewide</b>                                     | <b>2005</b> | <b>2006</b> | <b>2007</b> | <b>2008</b> | <b>2009</b> |
| Cases Filed  | 18,430      | 19,100      | 22,278      | 25,201      | 23,805      |
| Cases Disposed                                       | 21,223      | 23,293      | 19,201      | 19,058      | 20,147      |

### MANNER OF DISPOSITION

|             | <b>2005</b> | <b>2006</b> | <b>2007</b> | <b>2008</b> | <b>2009</b> |
|-------------|-------------|-------------|-------------|-------------|-------------|
| Defaults    | 8,375       | 9,045       | 9,812       | 8,609       | 8,316       |
| Settlements | 7,076       | 8,454       | 3,226       | 3,929       | 5,219       |
| Judgments   | 5,762       | 5,790       | 6,160       | 6,520       | 6,612       |
| Other       | 10          | 4           | 3           | 0           | 0           |
| Total       | 21,223      | 23,293      | 19,201      | 19,058      | 20,147      |

## DISTRICT COURT CRIMINAL CASELOAD

| <b>MISDEMEANORS</b>                                  |             |             |             |             |             |
|--|-------------|-------------|-------------|-------------|-------------|
| <b>Second Division<br/>Newport County</b>            | <b>2005</b> | <b>2006</b> | <b>2007</b> | <b>2008</b> | <b>2009</b> |
| Cases Filed  | 2,515       | 2,470       | 2,542       | 2,542       | 2,483       |
| Cases Disposed                                       | 2,311       | 2,401       | 2,376       | 2,222       | 2,351       |
| Total Pending  | 510         | 216         | 312         | 535         | 656         |
| % Over 60 Days Old                                   | 69%         | 41%         | 54%         | 74%         | 70%         |
| <b>Third Division<br/>Kent County</b>                | <b>2005</b> | <b>2006</b> | <b>2007</b> | <b>2008</b> | <b>2009</b> |
| Cases Filed  | 5,369       | 5,600       | 7,468       | 7,221       | 7,270       |
| Cases Disposed                                       | 4,986       | 4,970       | 7,019       | 6,858       | 6,695       |
| Total Pending  | 725         | 1,188       | 1,329       | 1,473       | 1,791       |
| % Over 60 Days Old                                   | 53%         | 56%         | 59%         | 69%         | 69%         |
| <b>Fourth Division<br/>Washington County</b>         | <b>2005</b> | <b>2006</b> | <b>2007</b> | <b>2008</b> | <b>2009</b> |
| Cases Filed  | 4,327       | 4,131       | 3,923       | 3,921       | 3,379       |
| Cases Disposed                                       | 4,150       | 3,971       | 3,790       | 3,779       | 3,212       |
| Total Pending  | 339         | 310         | 397         | 334         | 384         |
| % Over 60 Days Old                                   | 41%         | 21%         | 32%         | 37%         | 36%         |
| <b>Sixth Division<br/>Providence/ Bristol County</b> | <b>2005</b> | <b>2006</b> | <b>2007</b> | <b>2008</b> | <b>2009</b> |
| Cases Filed  | 18,357      | 17,747      | 15,674      | 14,474      | 13,469      |
| Cases Disposed                                       | 17,029      | 16,332      | 14,968      | 13,650      | 12,092      |
| Total Pending  | 1,462       | 1,641       | 1,498       | 1,428       | 2,121       |
| % Over 60 Days Old                                   | 39%         | 54%         | 48%         | 53%         | 64%         |
| <b>Statewide</b>                                     | <b>2005</b> | <b>2006</b> | <b>2007</b> | <b>2008</b> | <b>2009</b> |
| Cases Filed  | 30,568      | 29,948      | 29,607      | 28,158      | 26,601      |
| Cases Disposed                                       | 28,476      | 27,674      | 28,153      | 26,509      | 24,350      |
| Total Pending  | 3,036       | 3,355       | 3,536       | 3,770       | 4,952       |
| % Over 60 Days Old                                   | 48%         | 51%         | 51%         | 61%         | 64%         |

### MANNER OF DISPOSITION

|                           | <b>2005</b> | <b>2006</b> | <b>2007</b> | <b>2008</b> | <b>2009</b> |
|---------------------------|-------------|-------------|-------------|-------------|-------------|
| Pled                      | 21,040      | 20,492      | 19,704      | 18,102      | 16,537      |
| Filed                     | 59          | 57          | 56          | 80          | 93          |
| Dismissed                 | 6,624       | 6,675       | 6,400       | 5,541       | 5,586       |
| Trials                    | 557         | 243         | 206         | 273         | 134         |
| Other                     | 196         | 207         | 1,787       | 2,513       | 2,000       |
| Total                     | 28,476      | 27,674      | 28,153      | 26,509      | 24,350      |
| % Disposed within 60 Days | 88%         | 86%         | 82%         | 82%         | 81%         |

### STATEWIDE FELONIES

|       | <b>2005</b> | <b>2006</b> | <b>2007</b> | <b>2008</b> | <b>2009</b> |
|-------|-------------|-------------|-------------|-------------|-------------|
| Filed | 7,413       | 8,037       | 7,616       | 7,434       | 7,186       |

## WORKERS' COMPENSATION COURT MANNER/STAGE OF DISPOSITION

| <b>PRETRIAL</b>       | <b>2005</b> | <b>2006</b> | <b>2007</b> | <b>2008</b> | <b>2009</b> |
|-----------------------|-------------|-------------|-------------|-------------|-------------|
| Pretrial Order        | 3,147       | 3,264       | 3,016       | 2,892       | 2,815       |
| Order                 | 6           | 7           | 9           | 10          | 4           |
| Decree                | 103         | 95          | 120         | 99          | 110         |
| Consent Decree        | 69          | 132         | 227         | 149         | 154         |
| Major Surgery         | 0           | 0           | 0           | 0           | 0           |
| Withdrawn             | 2,644       | 2,555       | 2,646       | 2,898       | 2,608       |
| Discontinued          | 18          | 3           | 8           | 21          | 11          |
| Dismissed             | 74          | 68          | 67          | 67          | 61          |
| Other                 | 0           | 0           | 0           | 0           | 0           |
| Total                 | 6,061       | 6,124       | 6,093       | 6,136       | 5,763       |
| <b>TRIAL</b>          | <b>2005</b> | <b>2006</b> | <b>2007</b> | <b>2008</b> | <b>2009</b> |
| Decision              | 1302        | 1259        | 1220        | 1267        | 1047        |
| Consent Decree        | 173         | 199         | 141         | 145         | 138         |
| Trial Claim Withdrawn | 694         | 688         | 615         | 621         | 547         |
| Petition Withdrawn    | 128         | 104         | 119         | 100         | 62          |
| Order                 | 30          | 13          | 15          | 18          | 23          |
| Dismissed             | 25          | 17          | 12          | 14          | 4           |
| Discontinued          | 2           | 2           | 0           | 0           | 4           |
| Other                 | 21          | 22          | 30          | 35          | 31          |
| Total                 | 2,375       | 2,304       | 2,152       | 2,200       | 1,852       |
|                       | <b>2005</b> | <b>2006</b> | <b>2007</b> | <b>2008</b> | <b>2009</b> |
| Appeals               | 56          | 51          | 31          | 53          | 37          |
| Total Dispositions    | 8,492       | 8,479       | 8,276       | 8,389       | 7,652       |

## WORKERS' COMPENSATION COURT CASELOAD SUMMARY

| <b>EMPLOYEE PETITIONS</b>             | <b>2005</b>  | <b>2006</b>  | <b>2007</b>  | <b>2008</b>  | <b>2009</b>  |
|---------------------------------------|--------------|--------------|--------------|--------------|--------------|
| Original                              | 2,783        | 2,654        | 2,586        | 2,589        | 2,413        |
| To Review                             | 1,951        | 1,857        | 1,763        | 2,071        | 2,065        |
| Second Injury                         | 1            | 1            | 0            | 0            | 0            |
| To Enforce                            | 799          | 976          | 838          | 949          | 858          |
| <b>Total</b>                          | <b>5,534</b> | <b>5,488</b> | <b>5,187</b> | <b>5,609</b> | <b>5,336</b> |
| <b>EMPLOYER PETITIONS</b>             | <b>2005</b>  | <b>2006</b>  | <b>2007</b>  | <b>2008</b>  | <b>2009</b>  |
| To Review                             | 1,629        | 1,608        | 1,543        | 1,373        | 1,276        |
| <b>OTHER</b>                          | <b>2005</b>  | <b>2006</b>  | <b>2007</b>  | <b>2008</b>  | <b>2009</b>  |
| Lump Sum Settlement                   | 763          | 827          | 842          | 864          | 724          |
| Hospital/Physician Fees               | 131          | 164          | 172          | 175          | 162          |
| Miscellaneous                         | 177          | 287          | 306          | 275          | 214          |
| <b>Total</b>                          | <b>1,071</b> | <b>1,278</b> | <b>1,320</b> | <b>1,314</b> | <b>1,100</b> |
|                                       | <b>2005</b>  | <b>2006</b>  | <b>2007</b>  | <b>2008</b>  | <b>2009</b>  |
| Total Petitions                       | 8,234        | 8,374        | 8,050        | 8,296        | 7,712        |
| Total Dispositions                    | 8,492        | 8,479        | 8,276        | 8,389        | 7,652        |
| Total Pending Caseload                | 2,141        | 2,027        | 1,797        | 1,700        | 1,757        |
| Total Cases Pending Trial             | 1030         | 926          | 785          | 687          | 737          |
| % Pending Trial<br>More Than 270 Days | 37%          | 36%          | 34%          | 29%          | 34%          |

## RHODE ISLAND TRAFFIC TRIBUNAL (RITT) CASELOAD

|                         | <b>2005</b> | <b>2006</b> | <b>2007</b> | <b>2008</b> | <b>2009</b> |
|-------------------------|-------------|-------------|-------------|-------------|-------------|
| Total Summonses Issued* | 220,338     | 232,176     | 224,569     | 211,153     | 150,533     |
| RITT Summonses Issued   | 117,046     | 115,848     | 104,288     | 98,407      | 85,790      |
| Total Violations        | 142,365     | 140,107     | 126,828     | 118,387     | 104,395     |
| RITT Summonses Disposed | 118,876     | 117,319     | 108,216     | 101,044     | 89,841      |

### BREAKDOWN OF DISPOSED SUMMONSES

|                                 | <b>2005</b>    | <b>2006</b>    | <b>2007</b>    | <b>2008</b>    | <b>2009</b>   |
|---------------------------------|----------------|----------------|----------------|----------------|---------------|
| Court Hearings                  | 72,111         | 72,019         | 68,092         | 63,406         | 59,491        |
| Pay by Mail                     | 46,765         | 45,300         | 40,124         | 37,638         | 30,350        |
| <b>Total</b>                    | <b>118,876</b> | <b>117,319</b> | <b>108,216</b> | <b>101,044</b> | <b>89,841</b> |
| % Disposed of<br>Within 60 Days | 98%            | 97%            | 97%            | 97%            | 96%           |

### BREATHALYZER REFUSALS

|                                 | <b>2005</b> | <b>2006</b> | <b>2007</b> | <b>2008</b> | <b>2009</b> |
|---------------------------------|-------------|-------------|-------------|-------------|-------------|
| Filed                           | 1,844       | 1,670       | 1,838       | 1,751       | 1,694       |
| Disposed                        | 1,847       | 1,737       | 1,848       | 1,884       | 1,814       |
| % Disposed of<br>Within 60 Days | 89%         | 88%         | 84%         | 79%         | 80%         |

### INSURANCE

|                                 | <b>2005</b> | <b>2006</b> | <b>2007</b> | <b>2008</b> | <b>2009</b> |
|---------------------------------|-------------|-------------|-------------|-------------|-------------|
| Filed                           | 11,026      | 9,871       | 8,462       | 8,408       | 8,300       |
| Disposed                        | 11,446      | 10,294      | 8,925       | 8,699       | 8,623       |
| % Disposed of<br>Within 60 Days | 95%         | 94%         | 93%         | 94%         | 93%         |

### APPEALS

|          | <b>2005</b> | <b>2006</b> | <b>2007</b> | <b>2008</b> | <b>2009</b> |
|----------|-------------|-------------|-------------|-------------|-------------|
| Filed    | 673         | 559         | 692         | 497         | 432         |
| Disposed | 458         | 385         | 330         | 245         | 395         |
| Pending  | 50          | 54          | 162         | 18          | 59          |

\* Includes summonses for both the RITT and municipal courts.





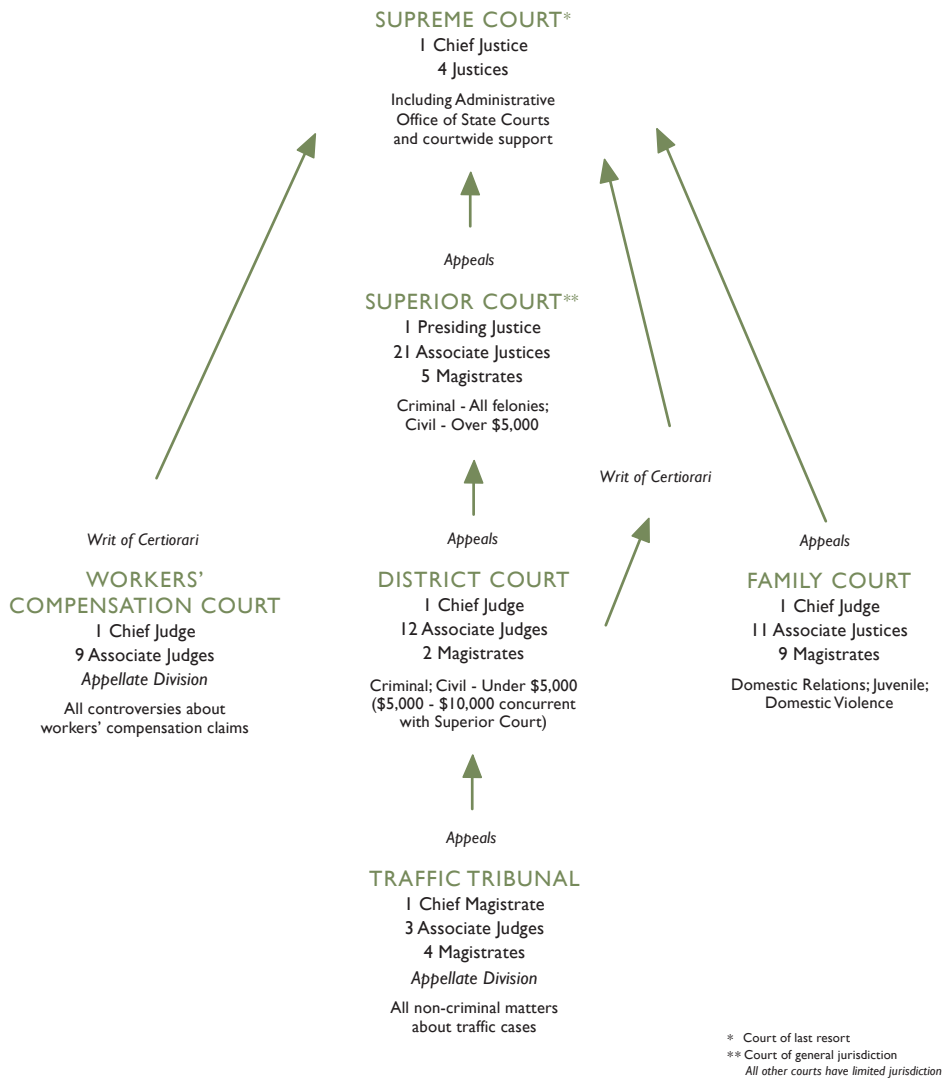
## COURT STRUCTURE



# Rhode Island Court Structure

## ADMINISTRATIVE OFFICE OF STATE COURTS

State Court Administrator • Finance and Budget • Employee Relations  
 State Law Library • Judicial Technology Center • Facilities and Operations/Security  
 Judicial Records Center • Domestic Violence Training and Monitoring Unit  
 Mandatory Continuing Legal Education • Community Outreach and Public Relations  
 Law Clerk Department • Judicial Planning • General Counsel and Alternative Dispute Resolution  
 Disciplinary Counsel • Supreme Court Clerk's Office • Appellate Screening  
 Administrative Assistant to Chief Justice • Interpreters' Office



\* Court of last resort  
 \*\* Court of general jurisdiction  
 All other courts have limited jurisdiction